



HELMET

| | |
|----------------------|-----|
| WH-1090S/1098T | 127 |
| WH-2090S/2092T/2098T | 128 |
| WH-3090S/3092T/3098T | 129 |
| WH-4092T/4098T/4100T | 130 |
| WH-5092T/5098T/5100T | 131 |
| WH-6092T/6098T | 132 |

WH-1090S/1098T



Technical specifications

| Item No | WH-1090S | WH-1098T |
|----------------------------|--------------------------------------|---|
| Filter size(mm) | 110x90x9mm | 110x90x9mm |
| Viewing area(mm) | 90x40mm | 98x48mm |
| Light state | DIN.3 OR DIN.4 | DIN.4 |
| Dark state | DIN.9-13 | DIN.9-13 |
| Switch time(s) | 1/25000s | 1/25000s |
| Delay time(s) | 0.6s | 0.2-0.8s |
| Sensitivity adjustment | \ | Low/High |
| Power on/off | Fully automatic | Fully automatic |
| Power supply | Solar cells & 2XAAA batteries | Solar cells & lithium batteries |
| Rate of UV transmittance | 313nm<0.00006%,365nm<0.00006% | 313nm<0.00006%,365nm<0.00006% |
| Rate of IR transmittance | 780~1300nm<0.003%,1300~2000nm<0.009% | 780~1300nm<0.003%,1300~2000nm<0.009% |
| Eye protection | EN379 1/2/1 | EN379 1/2/1 |
| Features & extra functions | \ | 1) Fine Sensitivity adjustment: suitable for small current welding. 2) Switching time setting: suitable for less than 20A TIG welding process. |
| Weight(g) | 520g | 520g |
| Filter pic. | | |



Out package 4pcs/1ctn, 49x49x35cm, 3/5kg

4pcs/1ctn, 49x49x35cm, 3/5kg

WH-2090S/2092T/2098T



Technical specifications

| Item No | WH-2090S | WH-2092T | WH-2098T |
|----------------------------|--------------------------------------|---|---|
| Filter size(mm) | 110x90x9mm | 110x90x9mm | 110x90x9mm |
| Viewing area(mm) | 90x40mm | 92x42mm | 98x48mm |
| Light state | DIN.3 OR DIN.4 | DIN.4 | DIN.4 |
| Dark state | DIN.9-13 | DIN.9-13 | DIN.9-13 |
| Switch time(s) | 1/25000s | 1/25000s | 1/25000s |
| Delay time(s) | 0.6s | 0.6s | 0.2-0.6s |
| Sensitivity adjustment | \ | adjustable, Grinding | Low/High |
| Power on/off | Fully automatic | Fully automatic | Fully automatic |
| Power supply | Solar cells & 2XAAA batteries | Solar cells & lithium batteries | Solar cells & lithium batteries |
| Rate of UV transmittance | 313nm<0.00006%,365nm<0.00006% | | |
| Rate of IR transmittance | 780~1300nm<0.003%,1300~2000nm<0.009% | | |
| Eye protection | | EN379 1/2/1 | |
| Features & extra functions | \ | 1) Fine Sensitivity adjustment: suitable for small current welding. 2) Switching time setting: suitable for less than 20A TIG welding process. | 1) Fine Sensitivity adjustment: suitable for small current welding. 2) Switching time setting: suitable for less than 20A TIG welding process. |
| Weight(g) | 520g | 520g | 520g |
| Filter pic. | | | |



Out package 4pcs/1ctn, 49x49x35cm, 3/5kg

49x49x35cm, 3/5kg

49x49x35cm, 3/5kg

WH-3090S/3092T/3098T



Technical specifications

| Item No | WH-3090S | WH-3092T | WH-3098T |
|----------------------------|--------------------------------------|---|---|
| Filter size(mm) | 110x90x9mm | 110x90x9mm | 110x90x9mm |
| Viewing area(mm) | 90x40mm | 92x42mm | 98x48mm |
| Light state | DIN.3 OR DIN.4 | DIN.4 | DIN.4 |
| Dark state | DIN.9-13 | DIN.9-13 | DIN.9-13 |
| Switch time(s) | 1/25000s | 1/25000s | 1/25000s |
| Delay time(s) | 0.6s | 0.6s | 0.2-0.6s |
| Sensitivity adjustment | \ | adjustable, Grinding | Low/High |
| Power on/off | Fully automatic | Fully automatic | Fully automatic |
| Power supply | Solar cells & 2XAAA batteries | Solar cells & lithium batteries | Solar cells & lithium batteries |
| Rate of UV transmittance | 313nm<0.00006%,365nm<0.00006% | | |
| Rate of IR transmittance | 780~1300nm<0.003%,1300~2000nm<0.009% | | |
| Eye protection | EN379 1/2/1 | | |
| Features & extra functions | \ | 1) Fine Sensitivity adjustment: suitable for small current welding. 2) Switching time setting: suitable for less than 20A TIG welding process. | 1) Fine Sensitivity adjustment: suitable for small current welding. 2) Switching time setting: suitable for less than 20A TIG welding process. |
| Weight(g) | | | |
| Filter pic. | 520g | 520g | 520g |



| | | | |
|-------------|------------------------------|-------------------|-------------------|
| Out package | 4pcs/1ctn, 49x49x35cm, 3/5kg | 49x49x35cm, 3/5kg | 49x49x35cm, 3/5kg |
|-------------|------------------------------|-------------------|-------------------|

WH-4092T/4098T/4100T



Technical specifications

| Item No | WH-4092T | WH-4098T | WH-4100T |
|----------------------------|---|---|---|
| Filter size(mm) | 110x90x9mm | 110x90x10mm | 110x90x9mm |
| Viewing area(mm) | 92x42mm | 98x48mm | 100x49mm |
| Light state | DIN.4 | DIN.4 | DIN.4 |
| Dark state | DIN.9-13 | DIN.9-13 | DIN.9-13 |
| Switch time(s) | 1/25000s | 1/25000s | 1/25000s |
| Delay time(s) | 0.6s | 0.2-0.8s adjustable | 0.2-0.8s adjustable |
| Sensitivity adjustment | adjustable, Grinding | adjustable, Grinding | adjustment,Grinding,Test,Low Bat |
| Power on/off | Fully automatic | Fully automatic | Fully automatic |
| Power supply | Solar cells & lithium batteries | Solar cells & lithium batteries | Solar cells,batteries change required 2 X CR2032 lithium batteries |
| Rate of UV transmittance | 313nm<0.00006%,365nm<0.00006% | | |
| Rate of IR transmittance | 780~1300nm<0.003%,1300~2000nm<0.009% | | |
| Eye protection | EN379 1/2/1 | | |
| Features & extra functions | 1) Fine Sensitivity adjustment: suitable for small current welding. 2) Switching time setting: suitable for less than 20A TIG welding process. | 1) Fine Sensitivity adjustment: suitable for small current welding. 2) Switching time setting: suitable for less than 20A TIG welding process. | 1) Fine Sensitivity adjustment: suitable for small current welding. 2) Switching time setting: suitable for less than 20A TIG welding process. |
| Weight(g) | 520g | 520g | 520g |
| Filter pic. | | | |



| | | | |
|-------------|-------------------|-------------------|-------------------|
| Out package | 49x49x35cm, 3/5kg | 49x49x35cm, 3/5kg | 49x49x35cm, 3/5kg |
|-------------|-------------------|-------------------|-------------------|

WH-5092T/5098T/5100T



Technical specifications

| Item No | WH-5092T | WH-5098T | WH-5100T |
|----------------------------|---|---|---|
| Filter size(mm) | 110x90x9mm | 110x90x10mm | 110x90x9mm |
| Viewing area(mm) | 92x42mm | 98x48mm | 100x49mm |
| Light state | DIN.4 | DIN.4 | DIN.4 |
| Dark state | DIN.9-13 | DIN.9-13 | DIN.9-13 |
| Switch time(s) | 1/25000s | 1/25000s | 1/25000s |
| Delay time(s) | 0.6s | 0.2-0.8s adjustable | 0.2-0.8s adjustable |
| Sensitivity adjustment | adjustable, Grinding | adjustable, Grinding | adjustment,Grinding,Test,Low Bat |
| Power on/off | Fully automatic | Fully automatic | Fully automatic |
| Power supply | Solar cells & lithium batteries | Solar cells & lithium batteries | Solar cells,batteries change required 2 X CR2032 lithium batteries |
| Rate of UV transmittance | | 313nm<0.00006%,365nm<0.00006% | |
| Rate of IR transmittance | | 780~1300nm<0.003%,1300~2000nm<0.009% | |
| Eye protection | | EN379 1/2/1 | |
| Features & extra functions | 1) Fine Sensivity adjustment: suitable for small current welding. 2) Switching time setting: suitable for less than 20A TIG welding process. | 1) Fine Sensivity adjustment: suitable for small current welding. 2) Switching time setting: suitable for less than 20A TIG welding process. | 1) Fine Sensivity adjustment: suitable for small current welding. 2) Switching time setting: suitable for less than 20A TIG welding process. |
| Weight(g) | 520g | 520g | 520g |
| Filter pic. | | | |



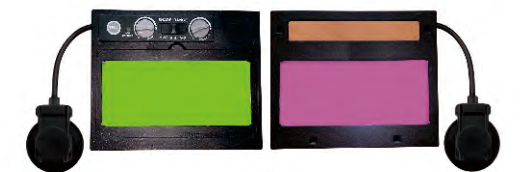
| Out package | 49x49x35cm, 3/5kg | 49x49x35cm, 3/5kg | 49x49x35cm, 3/5kg |
|-------------|-------------------|-------------------|-------------------|
|-------------|-------------------|-------------------|-------------------|

WH-6092T/6098T



Technical specifications

| Item No | WH-6092T | WH-6098T |
|----------------------------|---|---|
| Filter size(mm) | 110x90x9mm | 110x90x10mm |
| Viewing area(mm) | 98x43mm | 98x43mm |
| Light state | DIN.4 | DIN.4 |
| Dark state | DIN.9-13 | DIN.9-13 |
| Switch time(s) | 1/25000s | 1/25000s |
| Delay time(s) | 0.6s | 0.2-0.8s adjustable |
| Sensitivity adjustment | adjustable, Grinding | adjustable, Grinding |
| Power on/off | Fully automatic | Fully automatic |
| Power supply | Solar cells & lithium batteries | Solar cells & lithium batteries |
| Rate of UV transmittance | 313nm<0.00006%,365nm<0.00006% | 313nm<0.00006%,365nm<0.00006% |
| Rate of IR transmittance | 780~1300nm<0.003%,1300~2000nm<0.009% | 780~1300nm<0.003%,1300~2000nm<0.009% |
| Eye protection | EN379 1/2/1 | EN379 1/2/1 |
| Features & extra functions | 1) Fine Sensivity adjustment: suitable for small current welding. 2) Switching time setting: suitable for less than 20A TIG welding process. | 1) Fine Sensivity adjustment: suitable for small current welding. 2) Switching time setting: suitable for less than 20A TIG welding process. |
| Weight(g) | 490g | 500g |
| Filter pic. | | |



| Out package | 33x23x26cm, 3/5kg | 33x23x26cm, 3/5kg |
|-------------|-------------------|-------------------|
|-------------|-------------------|-------------------|